



UFED PHYSICAL ANALYZER

ACCELERATING INVESTIGATIONS IN A UNIFIED FORENSIC ENVIRONMENT

UFED Physical Analyzer is the industry's cutting-edge mobile forensics application. It provides users with advanced logical extraction, innovative decoding and analysis, and intuitive reporting capabilities for the most thorough mobile device investigations.



UFED PHYSICAL ANALYZER IS AVAILABLE WITH THE ULTIMATE SOLUTION OFFERING ON ANY UFED SYSTEM

Benefit from:

- Unmatched access to the largest amount of mobile data
- Enriching case information with intact and deleted data
- Searching, filtering and drilling down into the data that's most crucial to your investigation
- Reducing manual carving using an automatic decoding process
- High decoding confidence using HEX highlighting
- Saving time in device qualification
- Easily share information
- Frequent and content-rich versions

Unlock the actionable intelligence to accelerate investigations using the UFED Physical Analyzer's powerful features:

Extraction:

- Advanced logical, file system and physical extractions, including simple passcode recovery are supported for iOS devices:
- Devices running iOS 4.0 and higher are supported for advanced logical extraction
- Devices running iOS 3.0 and higher are supported for file system and physical extraction, and simple passcode recovery

Decoding:

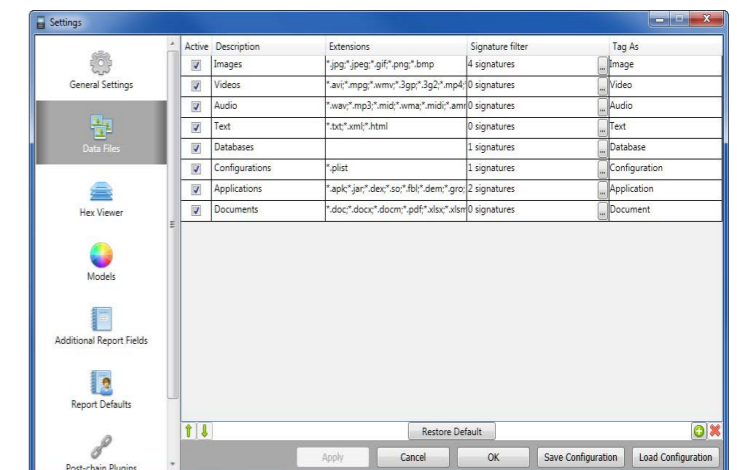
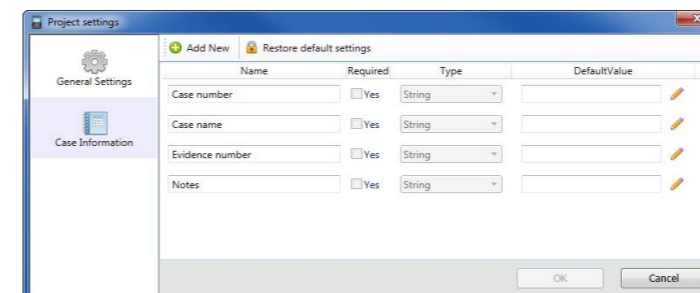
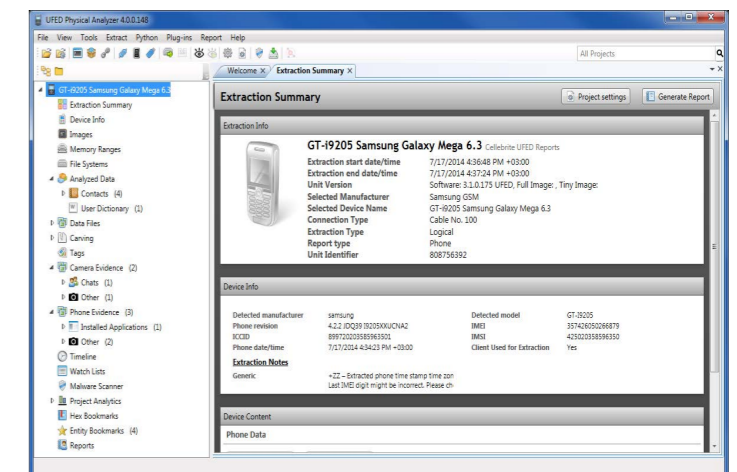
- Reveal much more deleted data by carving from unallocated space
- Decoding of JTAG and Chip-off physical extractions
- Decode a wide range of applications
- Manual decoding using Hex viewer with search capabilities or manual python scripting
- Validate recovered artifacts using the unique evidence verification engine
- Recover data and image files with the data and image carving function
- View, search and export tables and content (including deleted data) from SQLite database files with the SQLite Databases Viewer
- Plugin and Chain Management
- First to market with TomTom® trip-log decryption, decoding of BlackBerry® and BB5 devices, and many more advanced decoding capabilities

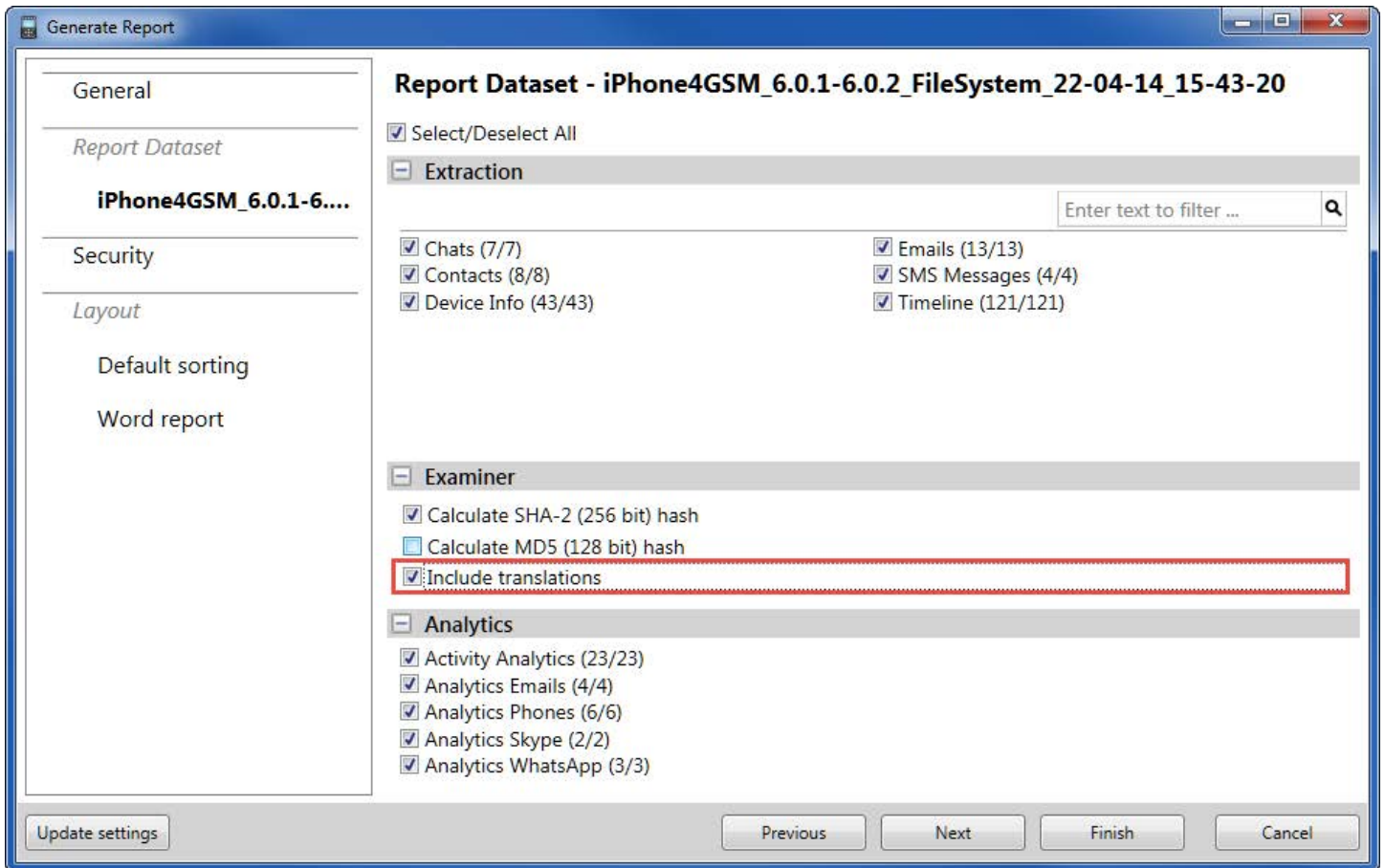
Analysis:

- Dig deep into your data using a rich set of analysis features
- Unique analysis capabilities include Advanced Search, Malware Detection, Offline Translation and Watch List
- Benefit from a rich set of views: Conversation View, Timeline, Maps View, Project Analytics

Reporting:

- Easily share data with authorized persons using UFED Reader (no installation, free of charge)
- Generate and customize reports in multiple formats





About Cellebrite

Cellebrite is the world leader in delivering cutting-edge mobile forensic solutions. Cellebrite provides flexible, field-proven and innovative cross-platform solutions for lab and field via its UFED Pro and UFED Field Series.

The company's comprehensive Universal Forensic Extraction Device (UFED) is designed to meet the challenges of unveiling the massive amount of data stored in the modern mobile device. The UFED Series is able to extract, decode, analyze and report data from thousands of mobile devices, including, smartphones, legacy and feature phones, portable GPS devices, tablets, memory cards and phones manufactured with Chinese chipsets. With more than 30,000 units deployed across 100 countries, UFED Series is the primary choice for forensic specialists in law enforcement, military, intelligence, corporate security and eDiscovery.

Founded in 1999, Cellebrite is a subsidiary of the Sun Corporation, a publicly traded Japanese company (6736/JQ)

To learn more, visit

www.cellebrite.com

sales@cellebrite.com

© 2015 Cellebrite Mobile Synchronization LTD. All rights reserved.